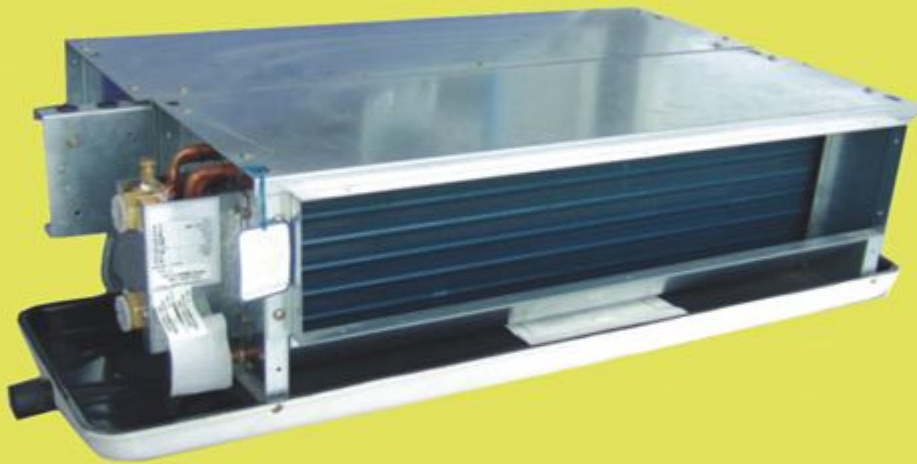


FD SERIES FAN-COIL UNIT



CEILING CONCEALED DUCTED TYPE

FAN COIL

fujiair
— AIR - CONDITIONERS —

www.fujiair.com

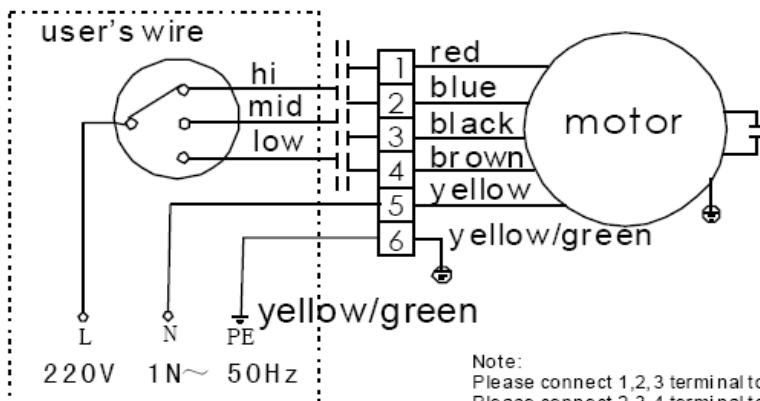
SPECIFICATION

Model		FD	02	03	04	05	06	08	10	12	14
Cooling Capacity	BTU/h		6,142	9,212	12,283	15,354	18,425	24,566	30,708	36,850	42,991
	W		1,800	2,700	3,600	4,500	5,400	7,200	9,000	10,800	12,600
Heating Capacity	BTU/h		9,212	13,819	18,425	23,202	27,637	36,850	46,062	55,274	64,487
	W		2,700	4,050	5,400	6,800	8,100	10,800	13,500	16,200	18,900
Air Flow Volume	CFM		200	300	400	500	600	800	1000	1200	1400
	CMH		340	510	680	850	1,020	1,360	1,700	2,040	2,380
	CFM		141	224	324	406	465	647	765	918	941
	CMH		240	380	550	690	790	1100	1300	1560	1600
	CFM		118	171	224	300	324	453	529	647	706
	CMH		200	290	380	510	550	770	900	1,100	1,200
Fan	Type	-	Centrifugal Type								
	QTY	-	1	1	2	2	2	3	4	4	4
Rated Input	30pa	W	44	59	72	87	108	156	174	212	253
	60pa	W	36	50	82	100	118	174	210	250	300
Power supply type	V/ph/HZ	220/1/50~60									
Pipe	In/Out	Inch	3/4"								
	Drain Pipe	-	3/4"								
Water Flow	GPM		1.50	2.24	2.99	3.74	4.49	5.98	7.48	8.98	10.47
	CMH		0.34	0.51	0.68	0.85	1.02	1.36	1.70	2.04	2.38
Pressure Drop	Ft.WG		3.78	6.06	6.36	11.04	12.72	10.21	13.72	14.73	17.74
	kPa		11.3	18.1	19	33	38	30.5	41	44	53
Noise Level	30pa	dB(A)	40	42	44	46	47	48	50	52	54
	60pa	dB(A)	41	43	45	47	49	50	50	54	56
NET WEIGHT	Kg		15	17	20	22	24	29	34	37	39

Remark:

1. Standard Cooling Condition: Air inlet Temp. DB 27°C, WB 19.5°C, Chiller water inlet/out temperature 7°C/12°C;
2. Standard Heating Condition: Air inlet Temp. DB 21°C, hot water inlet Temp. 60°C.
3. Our company reserves the unique right for update, in case of changing, please refer to the nameplate.

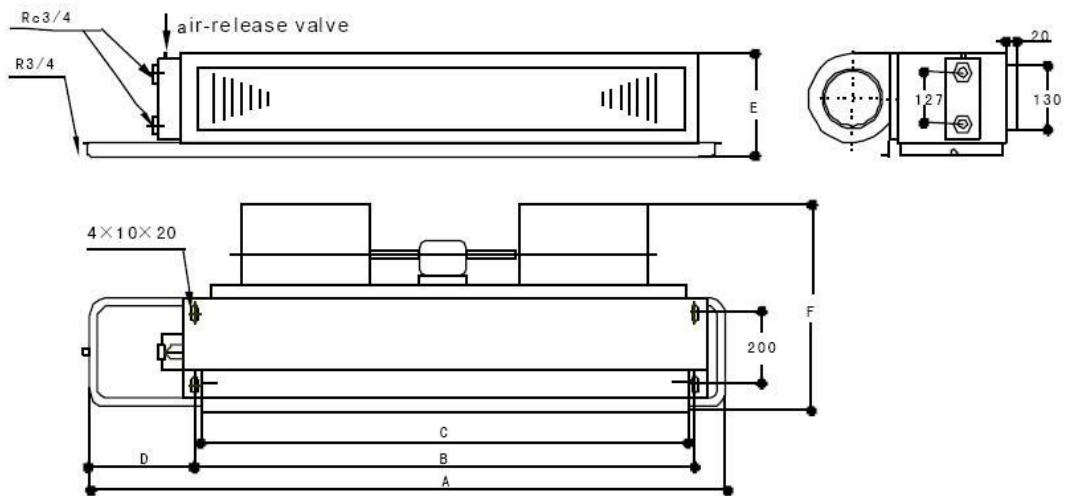
Fan coil unit wiring diagram



Note:
Please connect 1,2,3 terminal to the three-speed-switch if you need standard static pressure.
Please connect 2,3,4 terminal to the three-speed-switch if you need less static pressure.

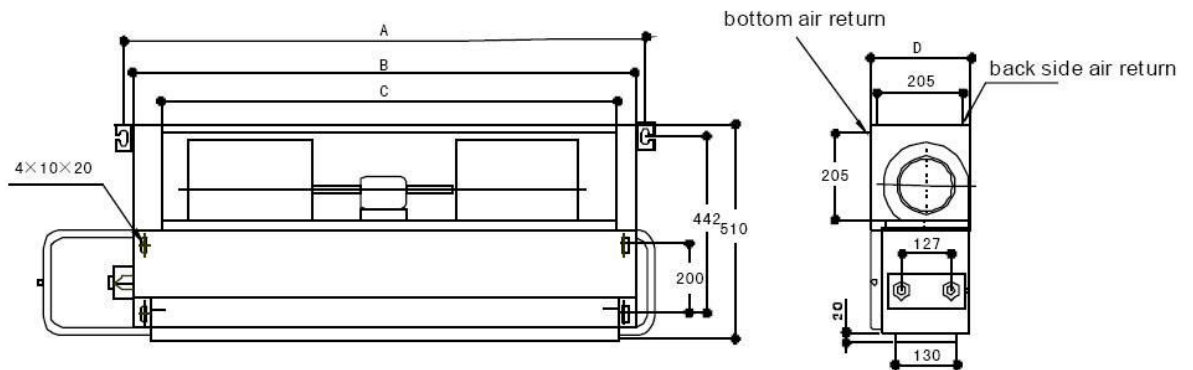
UNIT DIMENSION

No Return Plenum (30pa)



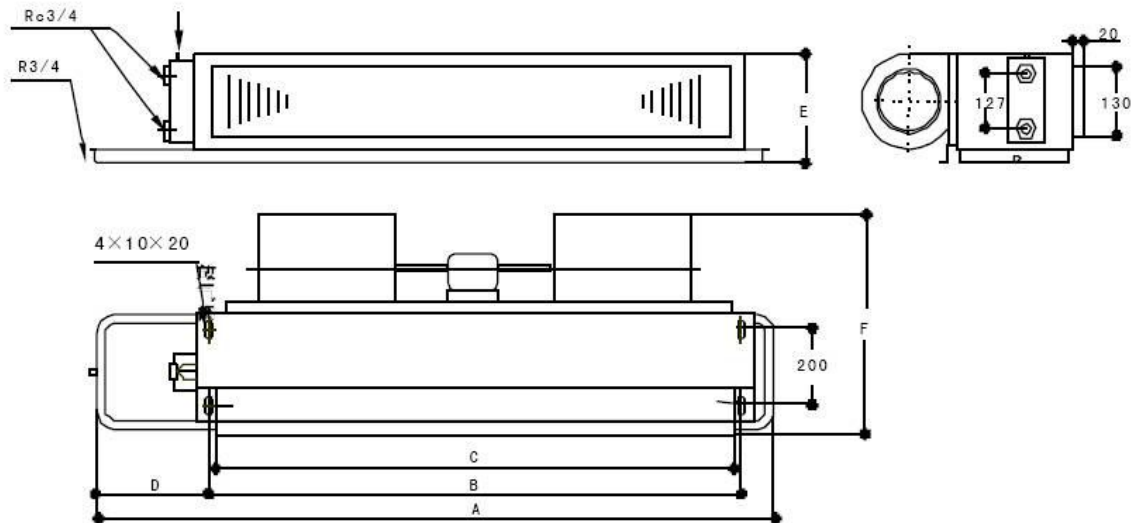
Mode	FD-02	FD-03	FD-04	FD-05	FD-06	FD-08	FD-10	FD-12	FD-14
A	770	770	1060	1060	1150	1590	1790	1790	1920
B	418	488	678	728	868	1328	1538	1538	1628
C	388	458	648	698	838	1298	1508	1508	1598
D	320	250	350	300	250	270	270	270	270
E	240								
F	490								

With return plenum (30pa)



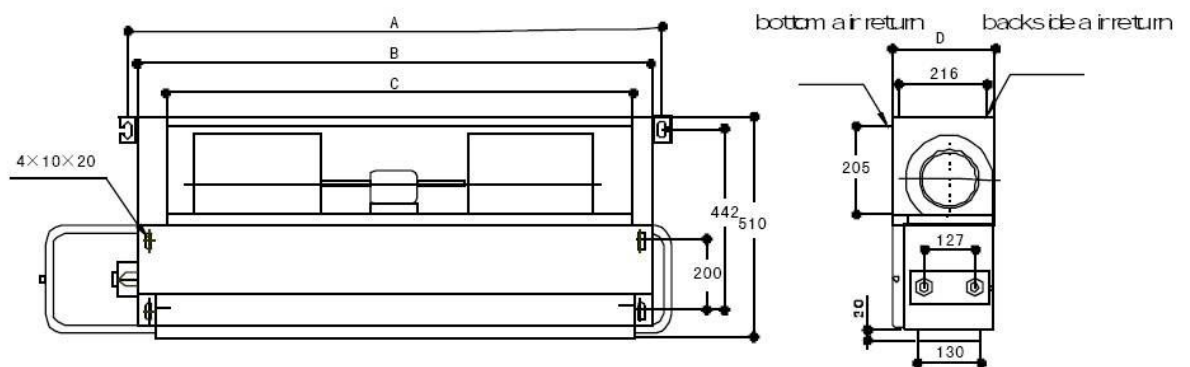
Model	FD-02	FD-03	FD-04	FD-05	FD-06	FD-08	FD-10	FD-12	FD-14
A	462	532	722	772	912	1372	1582	1582	1672
B	432	502	692	742	882	1342	1552	1552	1642
C	401	471	661	711	851	1311	1521	1521	1611
D	235								

No return Plenum (60pa)



Model	FD-05	FD-06	FD-08	FD-10	FD-12	FD-14
A	1060	1150	1590	1790	1790	1920
B	728	868	1328	1538	1538	1628
C	698	838	1298	1508	1508	1598
D	300	250	270	270	270	270
E	240		251			
F	490		483			

With Return Plenum (60pa)



Model	FD-05	FD-06	FD-08	FD-10	FD-12	FD-14
A	772	912	1372	1582	1582	1672
B	742	882	1342	1552	1552	1642
C	711	851	1311	1521	1521	1611
D	235		246			